



**Version 15.5**

# Map Update Manual

**Veloster 2012-2015**  
**Veloster 2016-2017 (Canada Model)**



Manual



USB Media



**Warning:** Preset radio stations and saved addresses may be deleted after update.

For Models	Veloster 2012-2017	
Update Media	Update Time	Map Version after update
32GB USB Memory	~ 180 min.	NA.14.47.47.XXX (Version 15.5)

 **Warning:** Preset radio stations and saved addresses may be deleted after update.

### Caution

1) Ensure that during the Update the battery power supply is in stable operational mode.

Either start the engine before starting the download or connect a power supply (battery charger).

2) Never switch off the car during the update process. The system will recover automatically.

Please keep the ignition switch on state and do not switch off.

Turn the ignition switch to the ON position and turn on AVN system.

 **DO NOT** turn off the ignition switch or eject USB during upgrade procedure

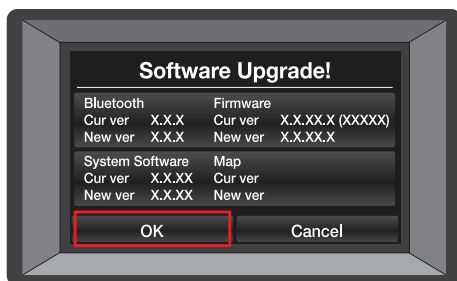
**STEP 1** ▶ Start the vehicle by using the key or with the Engine Start button.  
 (Engine must be running to keep the battery charged.  
 Make sure Bluetooth is turned off on your phone and  
 CDs are ejected from CD player.)

Insert the supplied USB stick into USB slot.

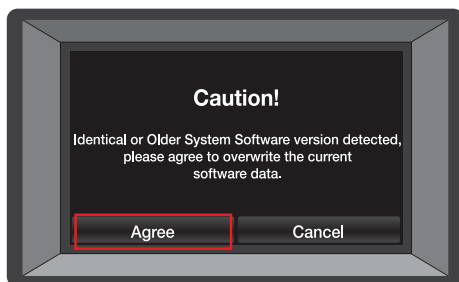


**HYUNDAI**

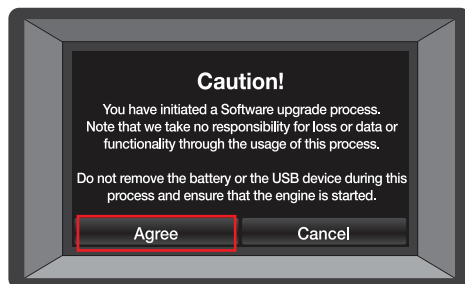
**STEP 2 ►** Press the “OK” button on the screen.



**STEP 3 ►** Press “Agree” button.



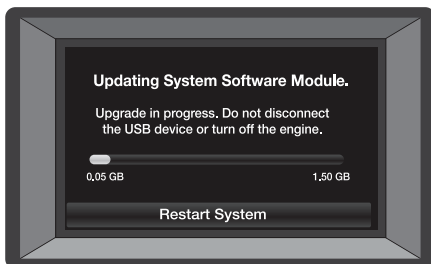
**STEP 4 ►** Press “Agree” button.



**HYUNDAI**

**STEP 5** ▶ The Map Upgrade will begin.  
This process will take approx. 180 minutes.

 **DO NOT** turn off the ignition switch or eject USB during upgrade procedure



**STEP 6** ▶ When the update is completed, the system will restart.

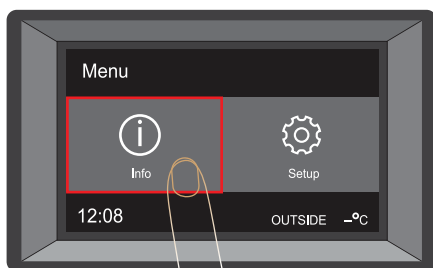




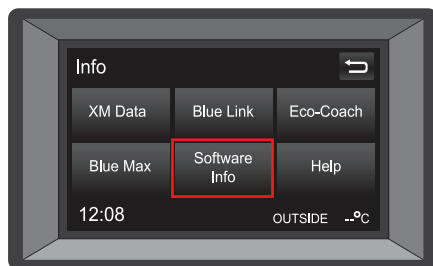
**STEP 7** ► Confirm that the map version has been updated.

Press the “INFO/SETUP” button.

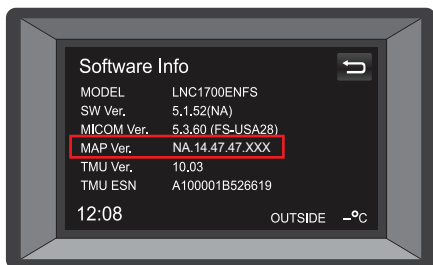
Press the “Info” button.



Press the “Software Info” button.



**Verify the Map Version has been updated to  
NA.14.47.47.XXX**



**HYUNDAI**

**AutoEver** NOTE

NOTE





# CAREFULLY READ THIS DOCUMENT BEFORE USING THIS MAP UPDATE.

## Warning

The map data may contain inaccurate or incomplete information due to the passage of time, changing circumstances, sources used and the nature of collecting comprehensive geographic data, any of which may lead to incorrect results. The map data is provided to you "as is", and you agree to use it at your own risk. Hyundai AutoEver and its licensors (and their licensors and suppliers) make no guarantees, representations or warranties of any kind, express or implied, arising by law or otherwise, including but not limited to, map update media quality, accuracy, completeness, effectiveness, reliability, fitness for a particular purpose, usefulness, use or results to be obtained from this map data, or that map data or server will be uninterrupted or error-free. Calculation errors may occur when using software and/or map update media in a navigation system such as those caused by local environmental conditions and/or incomplete or incorrect data. Hyundai AutoEver is not responsible for any software or hardware malfunctions, other direct, indirect, incidental special or consequential damages arising out of your use of or inability to use software or hardware. For any map update inquiries, contact us at 1-888-757-0010.

## Delivery and risk of loss

- Hyundai AutoEver will endeavor to deliver the map update within thirty (30) days of order acceptance. If multiple map updates are purchased, Hyundai AutoEver reserves the right to deliver each map update separately.
- Map updates will be delivered to your delivery address. The risk of loss or damage to the map updates will pass to you at the moment the map updates are delivered to your delivery address.
- If you refuse or neglect to take delivery of the map updates, Hyundai AutoEver reserves the right to charge you for the reasonable cost of stocking the map updates until delivery can be made.
- If delivery to you should fail for any reason outside of Hyundai AutoEver's control, Hyundai AutoEver reserves the right to cancel the purchase agreement and refund any amount paid.
- If Hyundai AutoEver delivers a map update that you did not order, you shall immediately inform Hyundai AutoEver of its mistake by calling us at 1-888-757-0010 and you shall, at Hyundai AutoEver's request, immediately arrange for the return of the map update (the costs of which shall be met by Hyundai AutoEver).

## Return Policy

- You may return the product within 30 Days after the product is delivered and not installed yet. Please return mail with a tracking number. Product that has been installed cannot be returned unless defective. Defective products or products damaged by shipping companies during transit for delivery can only be exchanged for the same item. Hyundai AutoEver will provide return label if shipped or recommended the wrong product. Please call us at 1-888-757-0010 for any questions or to start the process.
- Purchases may be canceled in accordance with clause a) provided that seal has not been broken. Downloading, installing or activating software are all considered as breaking the seal.
- You agree that the supply of services by Hyundai AutoEver will commence immediately on Hyundai AutoEver's acceptance of your purchase order. You will not be able to cancel the purchase agreement after supply of the services commences, unless Hyundai AutoEver fails to provide the services with reasonable care and skill.

## Force Majeure

Force majeure means circumstances that impede the fulfillment of Hyundai AutoEver's obligations under these terms and conditions which are not within Hyundai AutoEver's reasonable control, including late and/or delayed deliveries and incomplete deliveries by Hyundai AutoEver caused by circumstances beyond Hyundai AutoEver's reasonable control. In a force majeure situation all of Hyundai AutoEver's obligations shall be suspended. Should the period in which Hyundai AutoEver cannot fulfill its obligations as a result of force majeure for longer than ninety (90) calendar days, both parties shall be entitled to dissolve the purchase agreement in writing without there being an obligation to pay any compensation whatsoever arising out of or in connection with that dissolution.

## Limited Warranty

- Hyundai AutoEver does not and cannot warrant that the map updates operate in a manner that is complete error-free and that any information provided is always accurate.
  - Hyundai AutoEver offers a limited warranty that the map update media will be free from defects in workmanship and materials under normal use ("Defects") for a period of one (1) year from the date the map update media was purchased ("Warranty Period"). Any warranty obligation of Hyundai AutoEver under this section is expressly conditioned on your compliance with this agreement. During the Warranty Period, the map update media will be replaced by Hyundai AutoEver ("Limited Warranty") without charge for either parts or labor. If the map updates media is replaced after the Warranty Period, then the Warranty Period for the replacement shall expire on the later of six (6) months after the date of replacement or at the expiration of the original Warranty Period.
  - This Limited Warranty does not cover damage caused by normal wear and tear or as a result of the map update media being opened or altered by someone not authorized by Hyundai AutoEver, and does not cover damage caused by: misuse, moisture, liquids, proximity of exposure to heat and accident, abuse, non-compliance with the instructions supplied with the map update media, neglect or misapplication. The Limited Warranty does not cover any physical damage to the surface of the map update media.
  - EXCEPT FOR THIS LIMITED WARRANTY, AND TO THE MAXIMUM EXTENT PERMITTED BY APPLICABLE LAW, Hyundai AutoEver AND ITS SUPPLIERS PROVIDE THE MAP UPDATES "AS IS AND WITH ALL FAULTS", AND HEREBY DISCLAIM ALL OTHER WARRANTIES AND CONDITIONS, WHETHER EXPRESS, IMPLIED OR STATUTORY, INCLUDING, BUT NOT LIMITED TO, ANY (IF ANY) IMPLIED WARRANTIES, DUTIES OR CONDITIONS OF MERCHANTABILITY OR AVAILABILITY, OF ACCURACY OR COMPLETENESS OF RESPONSES, OF RESULTS, OF WORKMANLIKE EFFORT, AND OF REASONABLE CARE AND SKILL, ALL WITH REGARD TO THE MAP UPDATES, AND THE PROVISION OF OR FAILURE TO PROVIDE SUPPORT OR OTHER SERVICES, INFORMATION, SOFTWARE, AND RELATED MAP UPDATE MEDIA THROUGH THE MAP UPDATES OR OTHERWISE ARISING OUT OF THE USE OF THE MAP UPDATES. ALSO, THERE IS NO WARRANTY OR CONDITION OF QUIET ENJOYMENT, QUIET POSSESSION, OR NON-INFRINGEMENT WITH REGARD TO THE MAP UPDATES.
  - In order to make a claim under the Limited Warranty of a defect, you must contact us during the warranty period by calling customer support at 1-888-757-0010 to explain the defect and to obtain a return material authorization number if necessary. The map update media must be returned to Hyundai AutoEver as soon as possible following your notification of the defect, along with an explanation of the defect, to the address provided by Hyundai AutoEver. You must comply with any other return procedure stipulated by Hyundai AutoEver, if any.
  - The Limited Warranty is the only express warranty made to you and is provided in place of any other express warranties or similar obligations (if any) created by any advertising, documentation, packaging or other communications.
  - If applicable law requires any implied warranties with respect to the map update media, all such warranties are limited in duration to one (1) year. Some states and/or jurisdictions do not allow limitations on how long an implied warranty lasts, so the above may not apply to you. The provisions of this article do not affect any of your legal rights under applicable national legislation governing the sale of consumer goods.
  - This Limited Warranty is not transferable
  - This article sets forth your sole and exclusive remedy in connection with any warranties granted by Hyundai AutoEver hereunder
- Some jurisdictions do not allow limitations on how long an implied warranty lasts and/or do not allow the exclusion or limitation of incidental or consequential damages, so the above limitation or exclusion may not apply to you. This warranty gives you specific legal rights, and you may also have other rights which vary from jurisdiction to jurisdiction.

## Disclaimer of Liability

Hyundai AutoEver and its licensors (including their licensors and suppliers) shall not be liable to you; in respect of any claim, demand or action, irrespective of the nature of the cause of the claim, demand or action alleging any loss, injury or damages, direct or indirect, which may result from the use or possession of the information; or for any loss of profit, revenue, contracts or savings, or any other direct, indirect, incidental, special or consequential damages arising out of your use of or inability to use this information, any defect in the information, or the breach of these terms or conditions, whether in an action in contract or tort or based on warranty, even if Hyundai AutoEver or its licensors have been advised of the possibility of such damages. Some States, Territories and Countries do not allow certain liability exclusion or damages limitations, so to that extent the above may not apply to you.

**AutoEver**

**here**

Customer Support Center

1-888-757-0010

Mon-Fri 06:00-17:00 PT | Sat 06:00-12:00 PT | [www.mapsoft.com/hyundai](http://www.mapsoft.com/hyundai)